

PASTELCOTE® MASONRY FINISHING SYSTEM



Application Guide

Published February 2009

Sections:

- 1.0 Product Overview
- 2.0 Required Tools & Equipment
- 3.0 Installing the PastelBrik® Wall
- 4.0 Preparing the PastelCote® Finishing Mix
- 5.0 Applying the PastelCote® Finishing Mix
- 6.0 Additional Tips & Technical Info

Please read this entire guide before installing any masonry. The signature look of this product is a combination of unique brick texture, flush mortar joints, and a uniform application of the finishing mix. Any alterations or substitutions to these elements may result in (1) a finish that is visually-different from approved samples or other completed jobs, (2) areas of the masonry being more susceptible to coating damage and (3) a void in part or in full of the PastelCote® warranty.

These instructions should make you a more efficient, successful PastelCote® system installer. If you need further clarification or have issues specific to a job, please contact your local Boral sales representative or our customer support line at 877 5-BORAL-5.

1.0 Product Overview

PastelCote® is a unique masonry finishing system that offers a monolithic, natural-looking veneer with the proven durability of a masonry drainage wall. Through the use of oversize brick which show more face texture and a flush-struck mortar joint, the resulting walls tend to look more like traditional European stucco than individual brick bonded by mortar.

PastelCote® is sold and installed as a two-part system:

- 1.1 PastelBrik® - a specially-designed brick compatible with the PastelCote® finishing mix and deeply-textured to simulate a cobbled, rustic veneer. These brick are offered in queen ($7\frac{5}{8}'' \times 2\frac{3}{4}'' \times 3''$) and king ($9\frac{3}{4}'' \times 2\frac{3}{4}'' \times 2\frac{3}{4}''$) sizes depending on the market and are installed under normal codes and practices using a $\frac{3}{8}''$ flush-struck mortar joint.
- 1.2 PastelCote® Finishing Mix—a premixed acrylic masonry coating that provides a thick, sanded, matte finish in one application. The finishing mix is applied by brush or roller as described in section 5.0.

The result is at least a 40 mil ($1/32''$ +) thick layer of PastelCote® finishing mix that covers all mortar joints and brick and creates a uniform sanded finish on the brick surface. The product features six standard colors and the ability to provide custom colors upon request.



As a two-part system, the purchase of the PastelBrik® includes the appropriate amount of finishing mix material based on conservative coverage rates. The coating order with the desired color selection should be placed 2-3 weeks prior to the scheduled application start date. Remember that the labor involved in cleaning the walls (if necessary), masking all non-coated surfaces, and applying the finishing mix to the masonry are additional cost components.

Per the PastelCote® Limited Warranty, a certified installer is simply an individual who has reviewed all available application training materials and follows these specific recommendations as closely as possible given jobsite conditions.

The finishing mix is not intended for application on horizontal masonry surfaces such as wall caps, seating areas, steps or porches/patios. Although the coating has been used successfully on non-traffic, horizontal surfaces, Boral will not guarantee durability. We recommend instead that stone, concrete or other masonry be used in these design areas.



2.0 Required Tools & Equipment

This page highlights most of the items that may be required on a PastelCote® installation. The PastelBrik® are laid the same way as other face brick, so a masonry contractor will already know what is required locally to meet the material and equipment requirements as well as any specific building codes. Brick veneer walls are designed as drainage walls, so best practices would involve the effective use of flashing materials and weep holes. It will be important that these weeps not be clogged during the finishing mix application.









Easy and efficient access to the wall is critical when applying the finishing mix. The characteristics that make a PastelCote® wall distinctive - matte finish, sanded texture and significant thickness - present a little more challenge to the installer from a consistency perspective. Working corner-to-corner on a wall without stopping is very important to prevent cold joints, lap marks or other variations in texture or color due to changing jobsite conditions.

The application process is often more efficient and more productive from a square footage per hour measure if a crew of at least three is used. One person loading the wall and distributing the finishing mix, the second person coming behind with the finishing brush or roller, and the third responsible for mixing and supplying the material as well as knocking down drips etc. Given this interaction, work above the ground floor is best reached with scaffolding or ladder jacks/planks instead of individual ladders or a boom lift. Make sure the application procedure is safe and provides the means for maintaining a wet edge section-to-section.

An application kit is included in every shipment of finishing mix and includes a wallpaper brush, mud pan, finishing brush, detail brush, paint screen, hard copy of this application guide, and a copy of the material safety data sheet (MSDS) for the finishing mix. Additional tools can be sourced locally from a home center or paint store, or additional kits can be purchased from Boral Bricks.



Tools & Equipment Typically Needed for the Finishing Mix Application

<p>Instead of tooling the mortar joints, use a crumpled burlap bag, damp sponge or masonry brush to remove all excess mortar from joints and brick indentations.</p> <p>(If a concave or other style joint finish is used, please seek owner approval.)</p>	
<p>Although not always required, washing the wall with clean water and detergent may be necessary if the wall has experienced mud splatter or other soiling prior to the finishing mix application.</p>	
<p>All surfaces not targeted for the finishing mix must be masked with plastic, tape and other protective means. The finishing mix is heavily sanded, so it can etch glass and be difficult to remove from porous surfaces.</p>	
<p>On extremely hot and/or windy days, the brickwork may need to be pre-wet with clean water in order to keep the finishing mix from drying too quickly. Giving the PastelBrik® a "drink of water" will reduce the absorption rate.</p>	
<p>Although the finishing mix is premixed, each pail must be mixed briefly to ensure there is no separation of materials during transit or storage. A heavy-duty, low RPM drill should be used with a paddle mixer often used for drywall mud and thin mortar mix preparation.</p>	
<p>The finishing mix material is applied to the wall with a wallpaper brush and mud pan on most jobs. A 3/4" to 1" knap paint roller may be used as well.</p>	
<p>Just prior to drying, the finishing mix must be brushed lightly using a soft-bristle bench brush or equivalent to establish a consistent, sanded texture. A small paint brush can be used in confined areas to accomplish the same thing.</p>	
<p>To protect newly-coated walls from mud or dirt around the jobsite, a thick layer of straw or similar material should be placed around the foundation.</p>	

3.0 Installing the PastelBrik® Wall

The brick texture and mortar joint finish have as much to do with the unique appearance of a PastelCote® home as the matte, sanded coating. Since the wall construction and coating application often happen months apart and usually by different contractors, it is important that the expectations for the completed project are clearly communicated from the start. On some jobs, it may be best to construct a mock wall for evaluation and approval of the PastelBrik®, mortar joint finish and coating color selection.

This section covers brick installation to achieve the signature PastelCote® look: Heavily-textured queen or king size PastelBrik® with a flush-finished mortar joint. A smooth-texture PastelBrik may be produced under special terms and a standard concave mortar joint or other joint style used if a different look is intended. Again, any variations should be sampled and approved prior to installation.

3.1 Lay the Brick

All of the local building codes for installing brick veneer should be followed in regard to flashing, drainage control, wall ties and lintels. A $\frac{3}{8}$ " mortar joint should be used and struck flush with the trowel as the courses are installed. Regular Type N gray mortar should be used unless specific codes specify Type S or jobsite conditions require the addition of code-approved additives.



The PastelBrik® brick are laid like any other face brick veneer. The excess mortar is cut from the wall with the trowel.

3.2 Finish the Mortar Joints

In place of a joint tool normally used to strike a concave or similar joint profile, take a burlap bag or masonry brush or damp sponge or heavy leather glove to knock down and smooth out mortar that is partially filling the indentations. This technique compresses the mortar to create a more water-resistant and durable joint, promotes the texture of the brick and provides a contoured surface

so the finishing mix can be applied with more ease and better results. Expect the brick to be severely smeared with mortar residue. Since the coating will hide color imperfections on the brick and mortar, there is no need to clean the walls further until they are prepped for the finishing mix application.



The flush mortar joints are finished with a damp sponge in order to compress the joints and remove the excess mortar in the brick indentations. See highlights below.

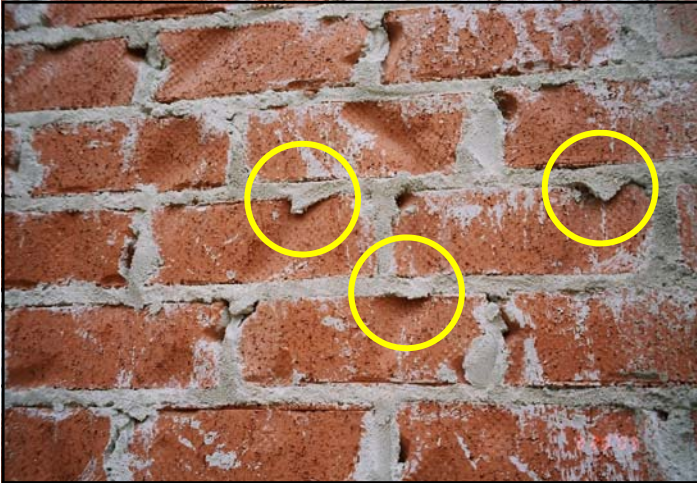


The brickwork needs to cure for at least 28 days prior to applying the finishing mix. The ideal situation places the finishing mix application just before the gutter and downspout installation, trim painting, architectural element installation, and landscape installation. This scheduling allows the walls the maximum time to cure and for any reactive alkaline salts to dissipate. High alkalinity is the enemy of most coatings fortified with acrylic polymers.

It is a good idea to protect the foundation from dirt and mud splatter using a thick layer of straw or other suitable material. If these protective measures are successful, then cleaning the wall with a pressure washer will not be as time-consuming and, in some instances, may not be required at all.

3.3 Prep the Wall for the Finishing Mix Application

If the masonry contractor does not finish the mortar joints as recommended, the finishing mix applicators may be facing a wall that looks like the one below. The mortar that is “hanging” in the brick indentations will interfere with efficient product application and may cause issues with how the finishing mix will wear over time. This mortar needs to be removed if possible by using a hammer, brick batt, or other tool. Safety glasses should be worn.



Pressure washing the walls a day or two prior to applying the finishing mix is always a good step to ensuring a clean bond with the brickwork, but it may be skipped if protective measures have kept the walls visibly clean; particularly around the foundation where mud splatter, paint, drywall mud, and other materials may be found through the course of construction.

When cleaning with a pressure washer, use clean water and stay away from most chemical cleaners. Residues from strong acids or strong bases will potentially harm the finishing mix, so use mild detergents or buffered acidic cleaners if plain water is not sufficient. Rinse the wall very well before and after any cleaning product is used.



Masking the job prior to applying the finishing mix should be as detailed as possible. The investment in time and labor to cover all surfaces not intended for application will see immediate returns by allowing crews to work faster loading the wall and distributing the material and to prevent any potential cleaning issues on other masonry like natural or cast stone. The application process can create a good bit of dripping and slinging of material from the brush or roller. Proper masking will allow applicators to keep up a brisk pace and maintain a wet edge without worrying about how careful they are in technique. Remember, the finishing mix is designed to be applied thick, quick, and worked into the brick. Some mess is therefore expected.



This wall has been well-masked with painter's tape and paper. All piping, electrical wiring and panels, vents, windows and doors should be completely covered.

All walls receiving the finishing mix material should be at a uniform moisture level. The application process should be postponed if areas of the wall are visibly light and dark. The walls do not have to be completely dry, because one of the tips for increasing the working time on the wall and maintaining a wet edge under hot conditions is to in fact pre-wet each section with clean water. What must be avoided is either saturated brickwork or a moisture gradient across the wall which may cause the finishing mix to dry and cure differently. If a variation in moisture across a wall is severe enough, it may contribute to shade differences in the color. There can also be moisture gradients between the PastelBrik® and the mortar joints that can sometimes create variations in cure rate. Since gutters and downspouts are normally not installed at this point, rain water can often streak down a wall or produce saturated brickwork at the foundation.

The finishing mix is designed to be applied directly over the masonry. No primers or conditioners are needed as long as the wall has cured for at least 28 days and is clean. However; constant water behind the cured finishing mix (coming through the wall due to poor flashing or damp proofing or coming from the foundation in rising damp situations) can have a detrimental effect on the durability. All practical attempts should be made in the design to maintain a drainage system and ensure proper flashing is in place for the PastelBrik® walls.

This wall has been installed with an air cavity against concrete block. The block has been damp-proofed on the grade side and will be topped with natural stone to reduce water penetration.



4.0 Preparing the PastelCote® Finishing Mix

The acrylic finishing mix designed for the PastelCote® system takes advantage of an advanced liquid polymer and ships to the jobsite in five gallon pails. Each pail contains 60 lbs. of material and is blended with the appropriate amount of water for high-build and high-hide capabilities based on roughly 72% solids content by volume. Even though the material is factory-blended, some mild separation may occur during transit or over extended storage periods.

A brief mixing of all pails, as they are opened for use, is important to material consistency. A heavy-duty, low RPM drill and a paddle mixer should be used long enough to adequately blend the finishing mix without entraining air. The correct drill speed and mixer blade should gently roll the material into a slight vortex as shown below.

The ideal consistency for the finishing mix is similar to that of pancake batter. It should be thick, but able to pour in a continuous, fluid stream.



The finishing mix is blended briefly as each pail is opened to ensure no materials have separated during transit or storage.

Health & Safety Notice

Photos in this application guide show the applicator wearing a protective suit and gloves. This is primarily done for personal cleanliness and should not convey a message that the material is harmful. It can be an irritant under prolonged exposure to the skin, but normally causes no health risks apart from ingestion. See the PastelCote® MSDS for more information.



The finishing mix is poured into a mud pan where it will be quickly pulled onto the wall with a wallpaper brush.

The pails should be opened only long enough to mix the material and pour what is required for immediate application. They should be stored in a shady area under hot conditions and completely sealed.

The material should not be allowed to freeze!

Although the mixing information printed on the pail says that no additional water needs to be added, there may be times under extremely hot and windy conditions that a little more water (up to 8 ounces) can help tremendously with workability. For consistency, all pails need to be dosed with equal amounts of water. Adding additional water to the finishing mix should only be carried out after pre-wetting of the masonry has been attempted.

5.0 Applying the PastelCote® Coating

Once the finishing mix has been poured from the pail into a mud pan or paint roller tray, it needs to get on the wall quickly. The application process follows three specific steps:

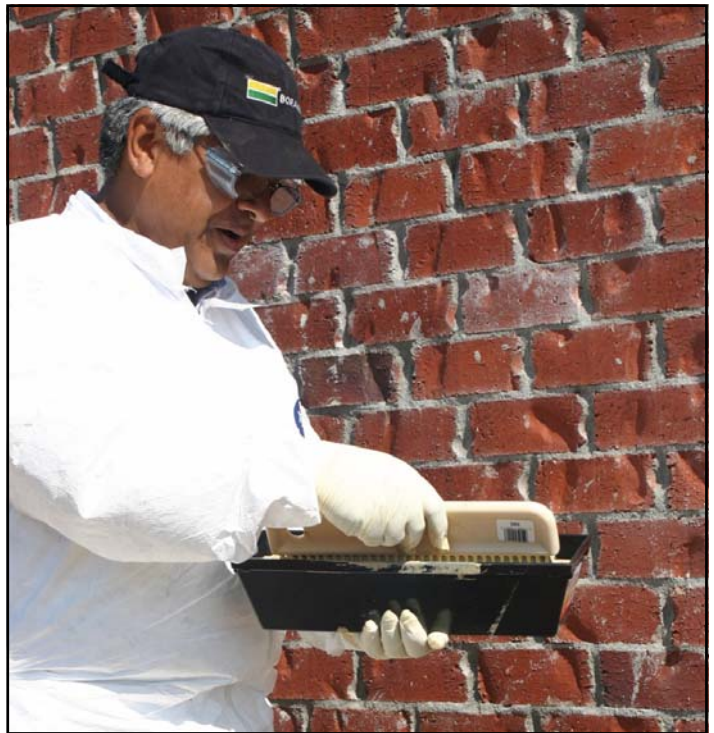
1. Load the product on the wall,
2. Distribute the material for even thickness, and
3. Minimize brush marks & create consistent texture.

These three steps are carried out one section at a time until an entire wall is covered corner-to-corner. The application should start at a top corner of the wall and work across. A section is defined as an area of the wall around 8-12 square feet that can be safely worked with a brush. A larger section can be worked if the material is being applied with a roller, but too large an area may find the finishing mix starting to set before the finishing brush or roller can do its job. The most efficient section size will be determined on the job by evaluating things such as size of crew, safe reach, temperature & humidity, direct sunlight versus shade, etc.

The work should be planned so that there is no stopping in the middle of a wall. Natural design breaks in the masonry should be noted that can potentially provide starting and stopping points. Although internal and external corners are recommended, horizontal breaks in the wall like a projecting soldier course, water table course or a tight row of windows may provide enough separation for a stopping point. It is best to complete an entire wall before knocking off for the day. Unexpected weather overnight could drastically change the conditions and impact drying and curing.



If a roller is used to load material on the wall, then a roller cover with a heavy knap of 3/4" or 1" should be used along with a high-capacity roller pan.



5.1 Load the Product on the Wall

Using the wallpaper brush and mud pan, the pan is held against the wall at the bottom of the section that is to be worked and a liberal amount of finishing mix is dragged up the wall. This step is repeated for the width of the section as a way to transfer a lot of material with minimal waste falling down or off the wall.

If a roller is used, it will need to be saturated with finishing mix in order to "float" the material more easily into the indentations and crevices in the joint lines. As with the brush application, the more material that is taken to the wall at a time, the faster the job will go and a more consistent thickness and finish will result.

Window and door jambs and other hard-to-work areas can be covered first using the detail brush.



The application process, whenever possible, should begin on a more inconspicuous and smaller wall so that 1) the applicators can get comfortable with the technique and 2) all parties can get another opportunity to see the color and texture and correct any issues. In order to remedy major color or texture variation on a wall, a second application can be used over the first with minimal impact on the overall look. Additional layers of finishing mix will definitely soften the indentations in the brick and mortar and may not match the rest of the job.

5.2 Distribute the Material for Even Thickness

The wallpaper brush or heavy-knap roller are used to spread the finishing mix evenly across each section. Use the joint lines to help “outline” each section so a straight wet edge can be maintained. This will allow a more precise blending and/or feathering of adjacent sections together. The finishing mix should be left on the wall as thick as possible (1/32”-1/16”), but any sagging, running or pooling of the material should be addressed by lightly dragging the wallpaper brush both vertically and horizontally. A downward stroke will pull the excess material onto the horizontal bed joints and then a lateral stroke can sweep the excess away. The excess material accumulated on the bristles of the wallpaper brush can be removed by cleaning the brush on an area of the wall not yet covered.



Using a roller, excess finishing mix can be removed from the wall through continued rolling. Like the wallpaper brush, the roller can be cleaned of excess material either by rolling it on an untreated area of the wall or by wiping the roller cover over the pan.

When blending sections together, always brush or roll from the dryer section to the newer/wetter section. This, along with moving quickly to maintain a wet edge, will minimize or eliminate any cold joints due to texture variation.



5.3 Minimize Brush Marks & Create Consistent Texture

The most overlooked step in the PastelCote® finishing mix application is the back-brushing or back-rolling of the distributed material just prior to it setting on the wall. This step tends to minimize brush marks created with the wallpaper brush and most importantly, pulls the sand to the surface for the signature suede finish. Based on job site conditions, the set time of the finishing mix will vary from just under a minute to several minutes. The material may not be completely dry at this point, but any forceful attempt to spread it or remove brush marks may cause the texture to become very grainy and will appear darker on the wall.

For back-brushing, any soft-bristle brush will work that can be lightly dragged. A green-bristle bench brush is shown below in its proper orientation to the wall. The bristles are almost parallel with the surface as the brush is dragged across the wall. This technique requires very little pressure and full strokes. The same dry-section-to-wet-section brush direction should be followed. The bristles should be kept clean by vigorously scrubbing on a paint screen or bare brickwork. Any touchups can be handled with the detail brush.



